

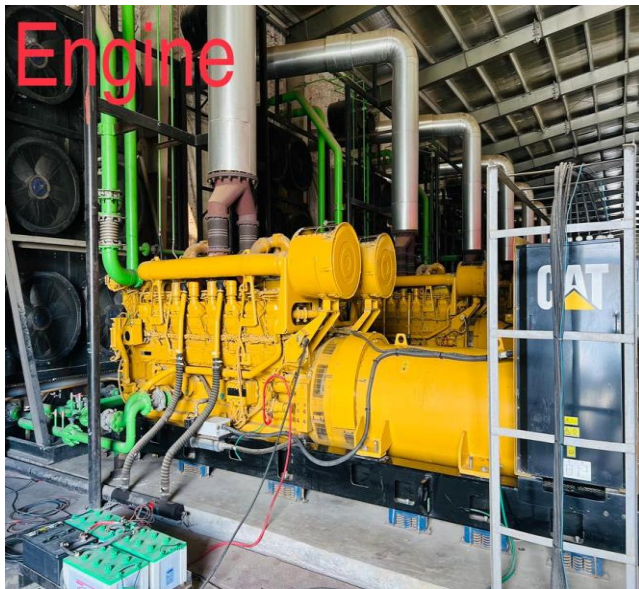
Plant Overview Report

| Engine Data | | |
|-------------|--|---|
| S.N | Name | Necessary information |
| 1 | Engine Brand | Caterpillar |
| 2 | Engine Model | 3516B |
| 3 | Engine Capacity (Each) | 1.6 MW |
| 4 | Total Number of Engines | 135 |
| 5 | Alternator | Marathon/Leroy Somer |
| 6 | Alternator duty/operation mode | Continuous |
| 7 | Alternator Capacity /Rating | 2000 KVA/ 1600 KW |
| 8 | Plant Capacity | 200 MW |
| 9 | Average Running hour | (1600-1800) hrs |
| 10 | Last established heat rate | N/A for HSD diesel engine.Allowed fuel consumption rate (0.267 L/kWh) |
| 11 | Major Maintenance | Performed regular casual maintenance. |
| 12 | Auxiliary Rate | Average auxiliary consumption is 14200 KW/day and 590 KW/hr. |
| 13 | Spare parts | We maintained minimum inventory. |
| 14 | Power Transformer Capacity | 45/55 MVA (11/230 KV). |
| 15 | Total number of Power Transformer | 6 |
| 16 | Medium voltage transformer Capacity | 4.5 MVA (0.4/11 KV) |
| 17 | Total number of medium voltage transformer | 66 |
| 18 | Auxiliary transformer capacity | 2 MVA |
| 19 | Total number of auxiliary transformer | 3 |
| 20 | Fuel separator pump capacity | 158 GPM |
| 21 | Total number of fuel separator pump | 4 |
| 22 | Fuel transfer pump capacity | 25000 Liter/hr |
| 23 | Total number of fuel transfer pump | 5 |

Plant Overview Report

| S.N | Name | Necessary Information | |
|-----|--|-------------------------|--|
| 1 | CAT 3516B series 2000KVA/1600KW is standby or Prime or Continuous Rating | Continuous rating | |
| 2 | Transformer capacity and Specification | Capacity: 45/55 MVA. | Product type: SFZ-55000/230 |
| | | | Product No. 201804031 |
| | | | Rated power: 55/55 MVA |
| | | | Rated voltage: 230/ 11kV |
| | | | Tapping range: (230 x 1.25%)/11 kV |
| | | | Rated cu rrent: 138.1/2886 .7A |
| | | | Phase displacement : YNdl |
| | | | Rated frequency: 50 Hz |
| | | | Number of phase: 3 |
| | | | Cooli ng methods : ONAN/O NAF (45MVA/55MVA) |
| | | | Insulation level: |
| | | | HV Line terminal LI/AC 950/395kV |
| | | | HV Neutral terminal LI/AC 325/ 140kV |
| | | | LV Line terminal LI/ AC 75/35kV |
| 3 | Do you have High voltage and low voltage cable if yes please give the detail sizes and length | Yes | High voltage and Low voltage cables detail given in cable data |
| 4 | Existing data of high voltage switchgear for outgoing panel and VCB Capacity | Incoming VCB | Product Type: 3AE1186-2 |
| | | | S No.: 2018024639 |
| | | | Ur: 12 KV |
| | | | Fr: 50/60 Hz |
| | | | Ir: 1250 A |
| | | | Isc : 40 kA |
| | | | Ud/Up: 42/75 kv |
| | | Outgoing VCB | Product Type: 3AK7546-4 |
| | | | S No.: 3AK7/00002036 |
| | | | Ur: 12 KV |
| | | | Fr: 50/60 Hz |
| | | | Ir: 4000 A |
| | | | Isc : 50 kA |
| | | | Ud/Up: 20/75 kv |

Plant Overview Report



Plant Overview Report



Plant Overview Report



Plant Overview Report



Plant Overview Report

